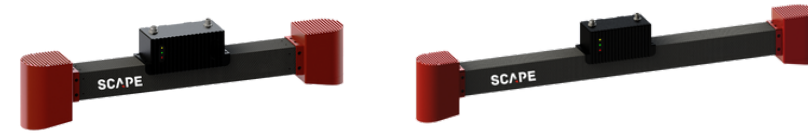


## Parameter table



# SCAPE

IMAGINE. CREATE. AUTOMATE.

Model		SCAPE Ultra-L OP18-35	SCAPE Ultra-XL OP18-36
Basic Parameters	Dimensions (L*W*H)	647*165*78 (mm)	966*165*80 (mm)
	Weight	2.49Kg	2.95kg
	Base line	550mm	860mm
FOV	Working range	1057-2070mm	1521-3800mm
	Near FOV	800*700mm@1057mm	1300*1000@1521mm
	Far FOV	1700*1400mm@2070mm	2600*2500@3800mm
Exposure Mode	Depth Camera	Global shutter	Global shutter
Accuracy	Z	< 0.1%	< 0.1%
	X/Y	< 0.5%	< 0.5%
Resolution	Resolution in the Z (depth)	1624×1240	2048×1536
Acquisition time	Typical acquisition time	0.9~1.5s	0.9~1.5s
Data Output	Depth Camera	√	√
	Point Cloud	wrl、obj、pcd、ply	wrl、obj、pcd、ply
API	C++, C#	C++, C#、Python、Halcon	C++, C#、Python、Halcon
Operation System	WINDOWS	Windows 10/11	Windows 10/11
	LINUX	Ubuntu 16.04/18.04/20.04	Ubuntu 16.04/18.04/20.04
Hardware Interface	Hirose 8pin	12~30VDC	12~30VDC
	Ethernet	M12 X-CODE, GigE, IEEE1588	M12 X-CODE, GigE, IEEE1588
Working Environment	Operation	0~40°C	0~40°C
	Storage	-20~70°C	-20~70°C
	Relative Humidity	20%~80% RH	20%~80% RH
	IP	IP65	IP65
Power Supply	Power interface	√	√
	Power input	24V DC, ≥2A	24V DC, ≥2A
	Power consumption	35W	35W
Certification	CE/FCC	√	√
	Laser Safety Class 3R	√	√

